



BC Children's Hospital Research Institute

Tel 604.875.3194
Fax 604.875.2496
www.bcchr.ca

950 West 28th Avenue
Vancouver, BC
V5Z 4H4



BCCH Research DM REDCap Mobile App Manual

Document History

Version Number:	Summary of Changes Made:	Effective Date:
1	New Document	November 2, 2015
2	Compatibility update	February, 23, 2016
3	Re-branding	September 29, 2016
4	Revisions- New features	January 3, 2017

Table of Content

About the REDCap Mobile App	3
In-Depth Manual in the App	3
App Workflow	3
Compatibility	4
Definitions	4
Collecting data from a device with or without the Mobile App	4
Features	5
Mobile App Users.....	5
Admin Users.....	5
User Rights in Main REDCap Project	6
User Rights in Mobile App.....	7
Getting Started	8
Procedure.....	8
Download the app.....	8
Using Mobile App.....	10
Set Up Mobile Project.....	10
Data collection (OFFLINE – NO INTERNET CONNECTION)	11
Sending Data	11
Send Emergency Data Dump.....	13
Remote Lockout.....	13
Mobile App Activity Log.....	13
Mobile App logs	13
REDCap Mobile App Section (in main project).....	14
Translate the Mobile App Interface	15
Current interface translations	15
Action Tags.....	15
Frequently Asked Questions	16

About the REDCap Mobile App

The REDCap Mobile App is an application that gives you the capability to collect your REDCap data in an offline (without internet) environment and sync the data back to your project on the REDCap server when it's connected to the internet. REDCap users can now collect their REDCap data in a mobile app on an iPhone, iPad, or Android phone or tablet. With REDCap and the REDCap Mobile App, users have new options for electronic data capture for studies that under previous circumstances would have dictated pen and paper. The app cannot be used on its own but is a companion app that must be used alongside REDCap itself. All users of the app must already be a REDCap user before using the app.

In-Depth Manual in the App

Once you download the app onto your device, there is also an in-depth manual within the app. Click "About the REDCap Mobile App" to see a brief summary and the option for a more detail manual.



App Workflow

Once a user in the project is given 'REDCap Mobile App' privileges, they can navigate to the mobile app page on the project's left-hand menu and set up the project inside the mobile app on their device. Once the mobile project is set up on the device, the user can collect data (which is stored locally on the device), and then at some point sync that data back to this project on the REDCap server.

1. **Create** and design project on your REDCap installation. Grant App Rights and get token
2. **Set up** project. While online, set up the project on the app using a code provided in REDCap
3. **Collect** data from participants. This can be done online or offline
4. **Send** affected data to the REDCap server securely

Compatibility

- iOS - Works on iPhone 4 and up, iPad 2 and up - requires iOS 6.0 or later
- Android - Requires Android 4.2 and up
- Device must support Encryption.
- Currently, the app does not support complex REDCap project structure (Large number of events / Fields/Instruments).

Definitions

- **Qualified Investigator (QI):** Primary individual in charge of and responsible for the proper conduct of a research project.
- **Project Administrator (PA):** Person responsible for the development of REDCap data instruments and the overall management of the project data.
- **Research Team:** Research assistants/nurses, data entry personnel and other personnel involved in the clinical research study and granted access to REDCap projects. The Research Team Members report to the QI but are generally directly supervised by the PA.
- **BCCH Research Data Management (DM):** BCCH Research Support Team that is responsible for managing projects in REDCap and assisting research teams in conducting research studies.
- **REDCap API (Application Programming Interface):** Interface that allows external applications to connect to REDCap remotely, and is used for programmatically retrieving or modifying data or settings within REDCap, such as performing automated data imports/exports to/from a specified REDCap project.
- **REDCap API Token:** The Mobile App uses API tokens, which determine which data in REDCap are accessible from the app. These tokens consist of a 32-character hex string that is unique to a particular REDCap user's rights in a particular REDCap project. Any given token can only be used to access a single project with the User Rights assigned to a particular REDCap user.

Collecting data from a device with or without the Mobile App

You DO NOT need to use the Mobile App to enter data into REDCap from a device. If you have an internet connection, you can simply use a browser to collect data through surveys or data entry forms.

The two options for collecting data from a device are compared below:

Online Browser	Mobile App
Use if there is a reliable and secure and internet connection	Use if there is no, or an unreliable, internet connection
Data is directly entered into the REDCap project once a form is saved on the device. No data is stored on the device.	Data is saved on the device once a form is saved, and will not be entered in the main REDCap project until data is synced (via an internet connection).

Data is always up-to-date in the REDCap project.	Data might be out of sync if the data stored on the device is not regularly synced to the main REDCap project.
No additional security measures required on the device.	Further security measures must be taken to ensure data security.
The REDCap interface is exactly the same as it is on desktop.	The interface is adjusted to fit uniquely for a mobile device, and looks slightly different.
User accounts and rights set in REDCap are applicable.	Separate user accounts and user rights are needed to be created in the App and API tokens are required to link back to user accounts in the main REDCap project.

Features

The REDCap Mobile App supports the following features:

- The mobile App is ideal for data collection that needs to be performed in areas without any available internet access.
- The mobile App can also be useful for those occasions when data collection is performed in areas with sporadic internet access.
- The user interface allows multiple individuals to access the App on a single device via a secure login.
- Teams with multiple mobile devices have the capability to collect data for one project, or multiple projects simultaneously.
- Administrative functions and other participants' records can be made secure prior to handing the mobile device to a participant during survey completion.
- In addition to text, photos can be captured by the mobile App and transmitted to the server.

Mobile App Users

Admin Users

The REDCap Mobile App uses an Admin account to manage its users. The Admin can create/update/delete Mobile App users, reset passwords and grant user rights on the App for specific projects. Project setup can be done by admin and regular App user accounts. In the REDCap Mobile App each user adds projects to their account through an API token. Each App user maintains unique project copies on the device and cannot share the same REDCap Mobile App projects. If multiple users need to access the same project, they each need to set-up the project independently under their account.

RECOMMENDATIONS:

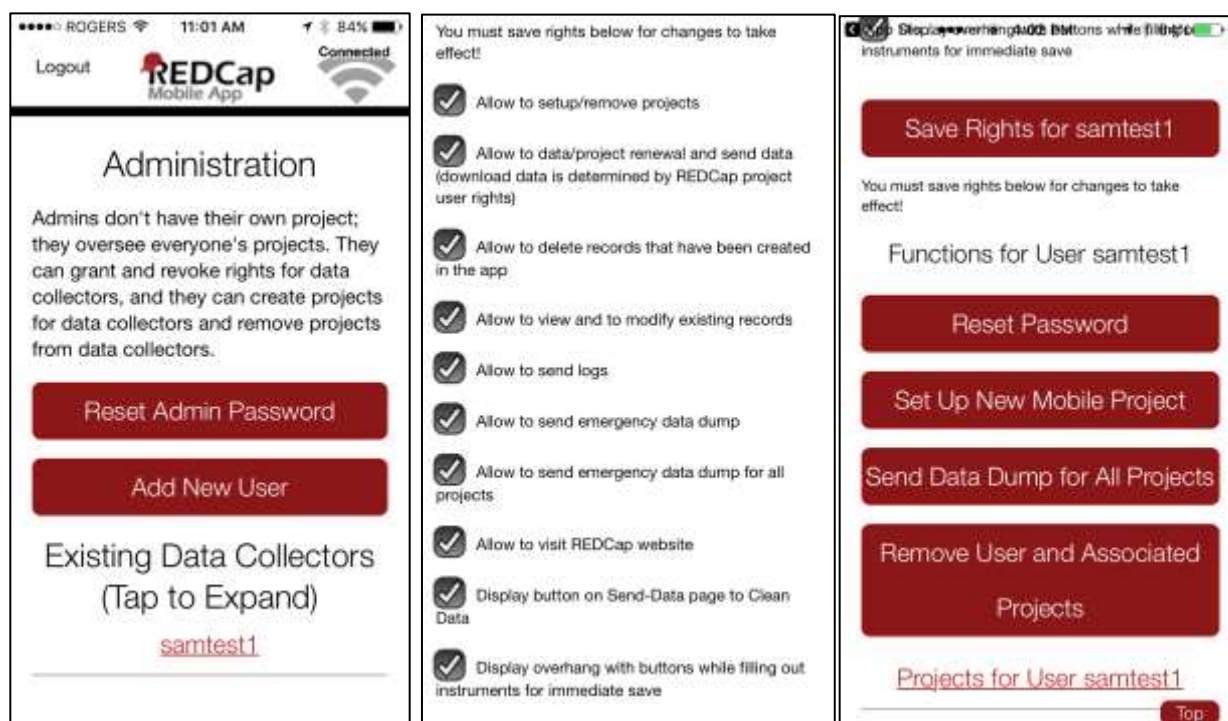
- The REDCap App Admin account should be held by the REDCap Project Administrator (PA).
- Each App user must request an API token from REDCap Mobile App page through their main REDCap project account and set-up the project on the App using their user-specific QR or initialization Code.

- **Note: The Admin password cannot be reset, so don't lose it!**

User Rights in Main REDCap Project

1. The “REDCap Mobile App” privilege allows users to:
 - Set up the project inside the Mobile App on your device.
 - Collect data which is stored locally on the device.
 - Sync that data back to this project on the REDCap server.
 - The REDCap Mobile App section is where users can view the App log and file archive.
2. The “Allow user to download data for all records to the app?” privilege allows users to:
 - Download records from the server to the app.
 - Unchecking this privilege prevents users from unwittingly (or wittingly) downloading lots of sensitive data to their mobile device.
 - If a user is given this privilege, then when they initialize the project in the App and the project contains at least one record, then the App will prompt the user to choose if they wish to download all the records to the App or not.

User Rights in Mobile App



- Each user account must be created in the REDCap Mobile App and have specific rights assigned to it, which are separate from their main REDCap project user account.
- Users will have a different username and pin/password in the Mobile App compared to the main REDCap project.
- The main project user account is linked through their API token and will ensure the user privileges inside the App mimic the privileges in the main REDCap project, including form rights (no access, read only and edit) and Data Access Groups.
- If a user is on multiple app projects, the user rights set in the app apply to the whole user account, and are not project specific. All user rights on an app accounts will apply across all projects.

RECOMMENDATIONS:

	REDCap Main Project (rc.cfri.ca)	REDCap Mobile App
Project Administrator	<ul style="list-style-type: none"> • Fill out REDCap Mobile App Request • Designate Mobile App-specific user's rights • Assign REDCap Mobile App rights to PA in the server project 	<ul style="list-style-type: none"> • Create own Admin account with pin (Admin pin CANNOT be reset) • Create user accounts, require username and 6 digit pin • Designate user's rights • Can set up projects for users
Data Entry/Regular User	<ul style="list-style-type: none"> • Acquire API token (QR code) • Data Entry form rights and Data Access Groups are identical to the App 	<ul style="list-style-type: none"> • Set-up project using QR or initialization Code • Collect data

		<ul style="list-style-type: none"> • Send data to the server and clean and reset project as soon as possible • Send App logs to server every 24h when possible
--	--	--

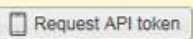
Getting Started

Procedure

1. Qualified Investigator (QI) or Project Administrator (PA) requests a Mobile App feature on a project through REDCap Help Desk (located in the REDCap left-end menu) by filling out a Mobile App Request Form. **Note:** BCCH Research REDCap Help Desk section is only available to users with 'User Rights'.
2. Upon approval, QI or PA receives the REDCap Mobile App User Manual with instructions on how to proceed.
3. QI or PA grants 'Mobile App' rights to themselves and to users who will collect data through the App.
4. Individual users can request an API token through the 'REDCap Mobile App' section (located in the REDCap left-end menu).

NOTICE: In order to set up this project in the REDCap mobile app, you must first request an API token.

You currently do not have an API token yet for this project. Having a REDCap API token allows other programs, scripts, or apps to communicate with the REDCap server remotely. An API token is required for using the REDCap mobile app so that the app can download and upload your project information and data. To request an API token, simply click the button below, which will send an email request to your local REDCap administrator. Once they have granted you an API token, in which you will be notified via email, then you may return to this page to set up this project on the REDCap mobile app on your device.

 Request API token

5. Once the token is created by BCCH Research DM Team, the user is notified by email.
6. A QR code is now available through the 'REDCap Mobile App' section for the user to set-up the project on the App.

It is assumed that you have already downloaded the REDCap mobile app on your mobile device or tablet. To set up this project in the REDCap app, open the app on your device, click the 'Set Up Mobile Project' button, then click the 'Scan QR Code' button, and then scan the QR code that you see displayed below.



[Can't get the QR code to work?](#)

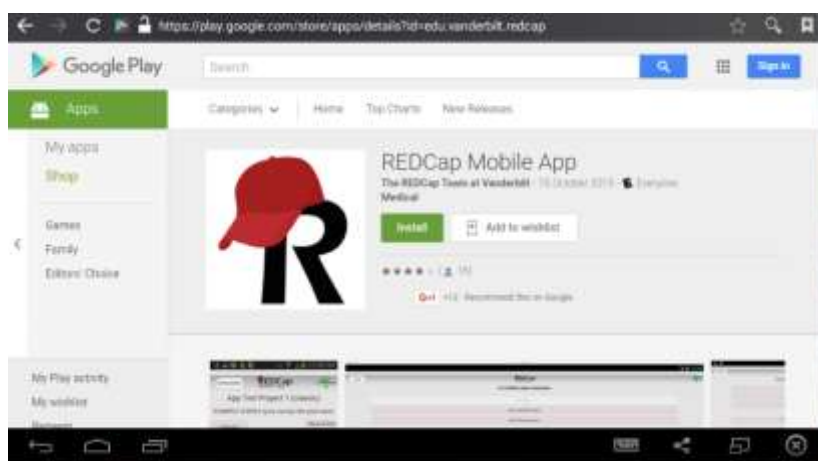
Download the app

Download the REDCap Mobile App directly on your device by using below links or log in your App store and search for "redcap" (Vanderbilt University)

- iOS app: <https://itunes.apple.com/us/app/redcap-mobile-app/id972760478>



- Android app: <https://play.google.com/store/apps/details?id=edu.vanderbilt.redcap>



Note: To use QR code, your device must have a built in camera and a QR code reader App installed. An alternative way to set up this project in your REDCap App on your mobile device or tablet is to use an initialization code. The initialization code will expire in 10 minutes.

2.9 Should the terms of this End-User License Terms for Users Downloading the REDCap Mobile App (the "REDCap Mobile App Agreement") conflict with any terms in the Google Play Terms of Service supplied by Google, Inc., the terms of this REDCap Mobile App Agreement shall control.

Agree

Do Not Agree

Using Mobile App

Set Up Mobile Project



Initialize a Project

Scan QR Code

To initialize a REDCap project in this app, first log in to your REDCap server as you normally would in your web browser; then go to the desired project in your My Projects list; and click the "Mobile App" link on the left-hand menu of the project. (If you do not see that link on the menu, then you probably have not been given "App" user rights yet in that project.) On that page, click the "Initialize Project" button to display the QR code, after which you can click the "Scan QR Code" button below to scan that QR code in order to initialize the project in the mobile app.

Scan QR Code

The Alternative Method

If you have trouble scanning the QR code, then click the "Can't get the QR code to work?" link on the page in your REDCap project. This will provide you with an initialization code that you can then enter into the app. Be sure to move your mouse arrow off of the QR code, or the scan will not work.

Code:

Submit Code

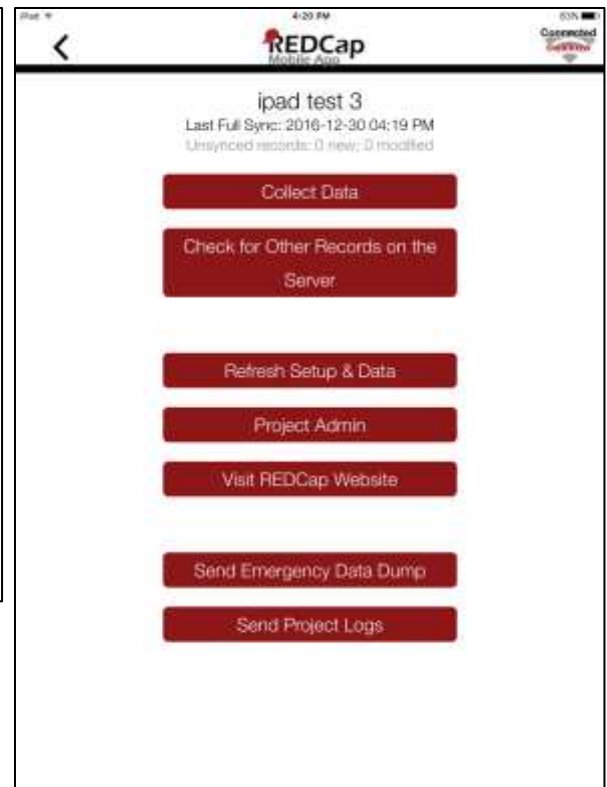
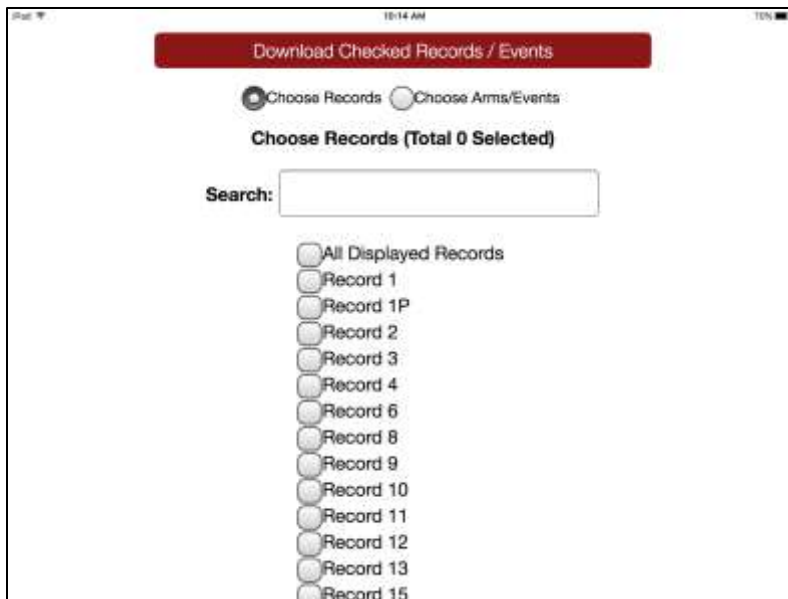
- Scan QR Code or Enter Initialization code (10 digit)

Note: To use QR code, your device must have a built in camera and a QR code reader App installed.

- Downloading the project. In addition to the data collection instruments, you can choose whether you want to download data from the project or not (when allowed).

The screenshot shows the 'Setting Up Project' screen. At the top, it says 'ipad test 3' and 'Set Up Complete'. Below this is a question: 'Do you want to download all 14 records from the project, or do you want to leave the project blank in the app?'. There are four red buttons with white text: 'Download All 14 Records', 'Download by Form Status', 'Get a Partial Set of Data', and 'Do NOT Download Records'.

You can also download records to the app based on form status, or get a partial set of data. You can choose to only pull in certain records, or only certain events or arms, or a combination of both.



Data collection (OFFLINE – NO INTERNET CONNECTION)

- Tap the Collect Data button and choose an instrument and a record. Enter data and set the form status at the bottom as needed.
- Records can be renamed on the first form. **Note that renamed records will appear as new records when uploaded to the main database, so you will need to delete the original record there to complete the replacement process.**
- Instruments can be secured so that participants/users will only have the option of entering data (and not traversing the rest of the app, which can jeopardize confidentiality). They can be unlocked via the primary user's pin.
- All data collection can be offline – without Internet access.

Sending Data

When mobile device is connected to INTERNET, you can send data to the main REDCap project on the server.

New Records

- They will be added to the main REDCap project immediately if no conflicts exist.

Existing Records

- An option to send the data to the server for each modified record appears, as well as the opportunity to view details of the differences between server data and app data for that record.

Back to App Store 4:14 PM 84%

Record 16 - Record merge candidate

This record has the same record id as a different record on the server. It is a candidate for merging. Do you want to merge the record on the app with the the record on the server (as specified in the choice details), to upload it with a new record id, or not to upload it at all?

☒ Merge into Record 16 according to Details Table (app values are default)
☐ Upload All Fields with New ID ([Select New Id](#))17
☐ Do Not Upload and Reassign to New ID on Mobile Device ([Select New Id](#)) 17
☐ Merge into Record 16 on only one Event

Hide details

The highlighted cell below is what will be sent to the REDCap server. If you wish, you may change the value to be sent by tapping it.

Event Field Name	Server Value	Mobile Value
Dose 2 On average, how many pills did you take each day last week?	<input type="radio"/> [BLANK]	<input checked="" type="radio"/> over 15
Dose 2 Using the handout, which level of dependence do you feel you are currently at?	<input type="radio"/> [BLANK]	<input checked="" type="radio"/> 3
Dose 2 Would you be willing to discuss your experiences with a psychiatrist?	<input type="radio"/> [BLANK]	<input checked="" type="radio"/> Yes
Dose 2 How open are you to further testing?	<input type="radio"/> [BLANK]	<input checked="" type="radio"/> undecided
Dose 2 Complete?	<input type="radio"/> [BLANK]	<input checked="" type="radio"/> Incomplete

- If a record is deleted from the app, it will not be deleted from the server after data syncing. You may only delete records from the main project on the server.
- You can also send a partial set of records, which is recommended when you have a large number of records to send.

Three options after data is sent

Progress

✓ Done! Data and files sent to server successfully.
1 record affected.

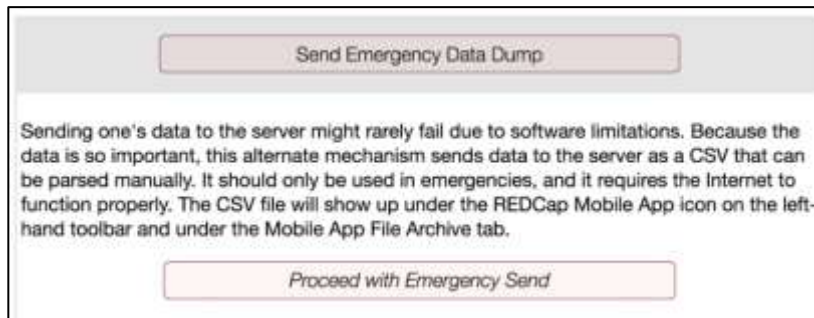
Options

Sent Records
Record 16.

It is recommended to click “Clean & Reset Mobile Project” to remove all data stored on the mobile device and replace with the most current project information from the main REDCap project.

Send Emergency Data Dump

When something prevents the app from sending data back to the server normally, you can use “Send Emergency Data Dump” option to send data to the server as a CSV. The file will show up under Mobile App File Archive tab.



Remote Lockout

- Revoke “REDCap Mobile App” user privilege on the User Rights page in the project to prevent users from accessing the project on their mobile devices.
- Delete API token to perform remote lockout. In this way, the lockout will be permanent and will cause all data currently stored in the app to be lost.

Delete API Token & Unlink Mobile App

If for security reasons or otherwise you wish to disconnect the REDCap mobile app from this project, you must delete your API token for this project. WARNING: Please be aware that if you are using this API token for the REDCap mobile app and you delete or regenerate the API token, then any data collected for this project on the REDCap mobile app that has not been synced back to the server yet will be PERMANENTLY LOST.

Delete API Token & Unlink Mobile App

Mobile App Activity Log

Mobile App logs

Project log for activity on the REDCap Mobile App is stored in the main project Mobile App File Archive. These can be transmitted to the server (for one given project) via the Send Project Logs button on the Project menu.




It records data creation, modifications, and uploads; renaming, deletion, and viewing of records; and downloads of project instruments and records.

REDCap Mobile App Section (in main project)

It displays a log of all mobile app related activity.

IOS APP test - Naveen

REDCap Mobile App

 Set Up Project in Mobile App


 Mobile App Dashboard

 Mobile App File Archive

Displayed below is a log of all mobile app related activity with regard to setting up a project in the mobile app, downloading data from REDCap to the app, and so forth.

Mobile App Dashboard of User Activity		
Time / Date	Username	Event
10/14/2015 12:49pm	nkarduri	Import data from app (1 new record created)
10/14/2015 12:48pm	nkarduri	Set up project in app
10/14/2015 12:44pm	nkarduri	Import data from app (1 new record created)
10/14/2015 12:44pm	nkarduri	Import data from app (1 new record created)
10/14/2015 12:43pm	nkarduri	Set up project in app

REDCap Mobile App

 Set Up Project in Mobile App

 Mobile App Dashboard

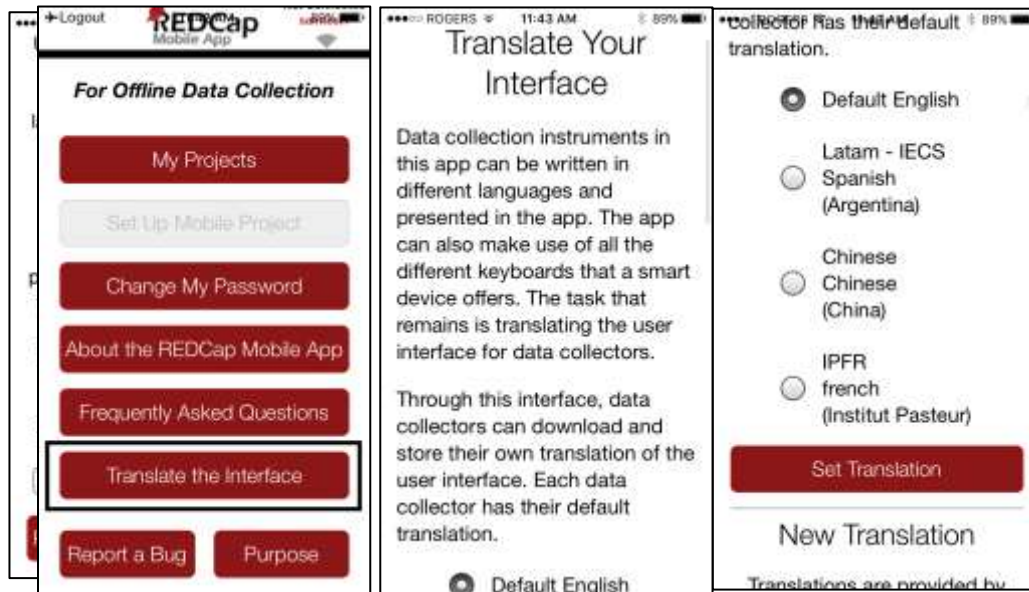
 Mobile App File Archive

Listed below are all the files sent from the mobile app for this project. These might include logging files of all activity and data changes made on the app for a given user, as well as data exports from the app when something prevented the app from sending data back to the server normally (i.e., escape hatch). You may click the file icon on the right to download it.

Files Sent from Mobile App		
File Info	File Type	Download
1444852201268.log.csv Date uploaded: 10/14/2015 12:50pm Uploaded by: nkarduri (Naveen karduri) File size: 0.52 KB	App Logging	
1444851920580.log.csv Date uploaded: 10/14/2015 12:45pm Uploaded by: nkarduri (Naveen karduri) File size: 0.97 KB	App Logging	

Translate the Mobile App Interface

You can translate the interface (buttons, instructions, etc.).



Current interface translations

- This will be applied to the entire app
- Translations are done by other REDCap users
- You can request a translation
- This feature does not translate your instruments, just the interface around them

Action Tags

Action Tags are special terms that begin with the '@' sign that can be placed inside a field's Field Annotation. Each action tag has a corresponding action that is performed for the field when displayed on data entry forms and survey pages. A few of these action tags are just for the mobile app, and they are listed below:

@HIDDEN-APP	Hides the field only on the form ONLY on the REDCap Mobile App. Field will stay hidden even if branching logic attempts to make it visible.
@READONLY-APP	Makes the field read-only (i.e., disabled) on the form ONLY on the REDCap Mobile App so that its value cannot be changed.
@BARCODE-APP	Allows the REDCap Mobile App to capture the value of a barcode or QR code by scanning it with the device's camera. NOTE: For use only in the REDCap Mobile App.

You can apply the actions while building your project on the server side, before downloading the app to your device.

Frequently Asked Questions

What features of REDCap are supported?

- Data entry
- DAGS
- GPS
- Pictures, videos, and audio can be uploaded into designated file fields.
- Signatures fields
- Action tags
- Instruments can be secured so that participants/users can enter their own data.

What noteworthy features of REDCap aren't supported?

- CATS (Computer Adaptive Test Surveys)
- Double data entry
- Survey specific features
- Survey queue
- Randomization
- Viewing files
- Inline audio/video
- Survey instructions
- Survey stop actions
- Survey thank you text
- Downloadable files in file fields

How are surveys and forms handled?

Normal REDCap Survey features are not used for Mobile App data collection. They are treated as entire forms without the pagination. Instruments can be secured with a pin so that participants/users will only have the option of entering data when the device is handed over to them. The instrument can be locked/unlocked via the primary user's pin.

What are the weaknesses of the app?

If you have online access, REDCap Mobile is a better platform because it inputs data directly into REDCap. Sending data simultaneously from multiple devices is not supported. Sending data is, at present, a complicated process.

What is the workflow of the app?

- Via an admin: Create a user; push projects to them; let them collect data; allow them to send data or send data yourself; clean & refresh the project; repeat; remove project.

- Via a user: Set up a project or multiple projects; collect data; send data; clean & refresh the project; repeat; remove project.

Can I limit users of my app so that they cannot do all functions?

User access can be restricted through the administrator interface. An administrator on the app can assign users the appropriate level of data access rights.

Can I use multi-tablet setups?

Yes, so far (September 2015) the record is 80 tablets.

Can I use data access groups?

Yes, Data Access Groups (DAGs) are supported by the app. Whichever REDCap user supplies the download code – this user’s DAG is used.

Can I restrict access to data?

Access to data can be restricted by using DAGs. You can also restrict all data via the user rights.

What happens if a tablet or phone is stolen?

Go to REDCap and revoke the API token – unless there is more than one device distributed with this token. If there is only one device, revoking the API token will not allow the thief to send data, download new data, or refresh the project. Further, when online, the thief cannot access any existing data. If there are multiple devices, revoking the API token will disable ALL devices. Use with care. Either way, access is protected with a PIN.

Instrument Design Hints

- You can include any fields and images (including signatures).
- You can’t include video or audio as those will not be downloaded.
- You can’t include external PDFs as those will not be downloaded.
- Signatures will be downloaded as those seem important enough information for a small amount of bytes.
- Regular file fields will not be downloaded. Their filenames and sizes will attempt to be downloaded.
- Don’t make your forms too long. Shorter (< 100 fields) fields seem to work better with users. 1000+ field forms can induce frustration. Making your form too long can crash your device. Break up a long form into smaller forms and use the “Save and Go to Next Instrument” button.
- Heavy amounts of branching logic and calculations will slow down the rendering of your form.

If you have any questions or concerns about REDCap Mobile App, please contact us at redcap@cfri.ca